

Photos and Drawings for the Dearborn Model 19-1 Universal Frame for the Dozer Blade, Snow Blade and V-Snow Plow Blades - by Don Bailey



*Best internet source
of information and help
for old Ford tractors.*

www.ntractorclub.com







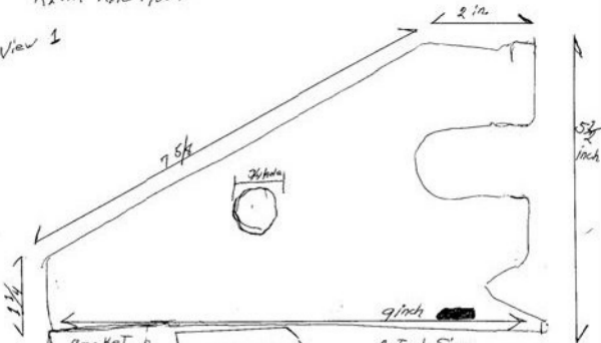






REAR Axle Mount

View 1



Bracket

2 inch



Chain Slot

rivets

Same Bracket

Brackets 5 inch x 2 inch
Before Bend

Actual Size

Made of
3/8 plate

Chain Slot
This end

1/2"

2 Rivets



1/2"



1/2"

Fold on Line → Line up with chain Slot ^{View} 1
Flat View of Axle Brkt.

Line



1 of 2

Edge of Paper is not to be

Right



$8 \frac{7}{8}$

Standing on End
Actual Size

$8 \frac{7}{8}$



$14 \frac{1}{8}$

$5/8$ hole



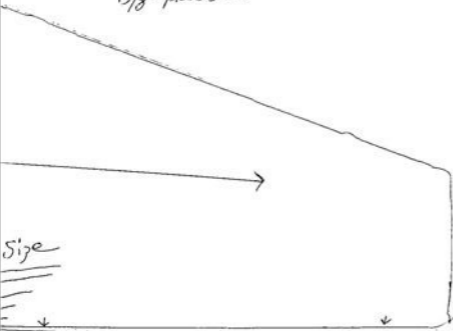
Actual

Align
He

Front Axle Brkt.

2 of 2

3/8 plate Steel

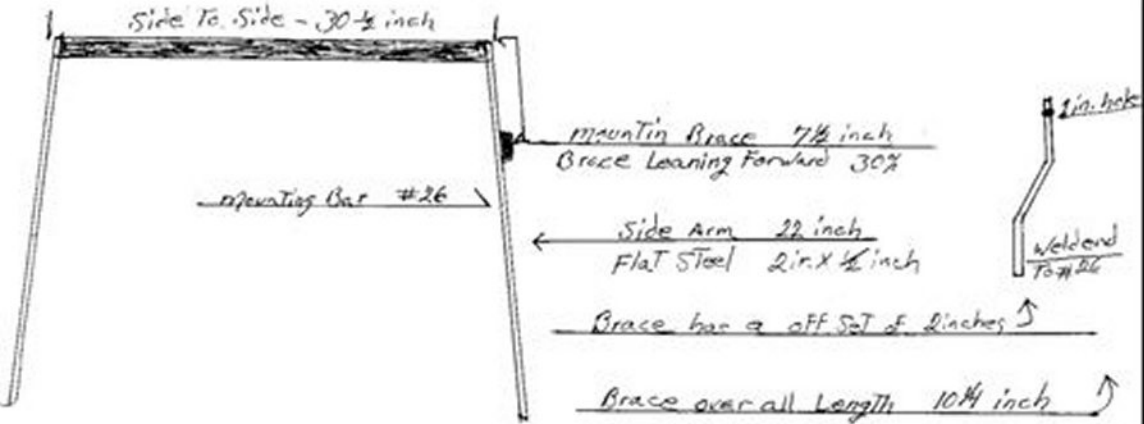


Size
=====
=====
=====
=====
↓

RE
↑

This is The Folded edge
Bend or weld To Main Brkt





Framers Built with 2" Steel Pipe / I would use Double Wall Pipe

Cable, 3/8" X 87 1/2 inch, Threaded Both Ends

Rear Cross Member 39 inches outside 2" Pipe

inside measurement 35 1/2 inch

Cross member 1 3/4 inch across

Rear Cross member drops down in the center 2 1/2 in

Front cross member 2 1/2 in Angle iron

2 inch holes

4 inch Pulley and Mount

65 1/2 in / Pulley center to inside Rear Cross member

Front Plate 1/2 in Steel

over all ~~width~~ 8 ft 2 inches = CF Frame









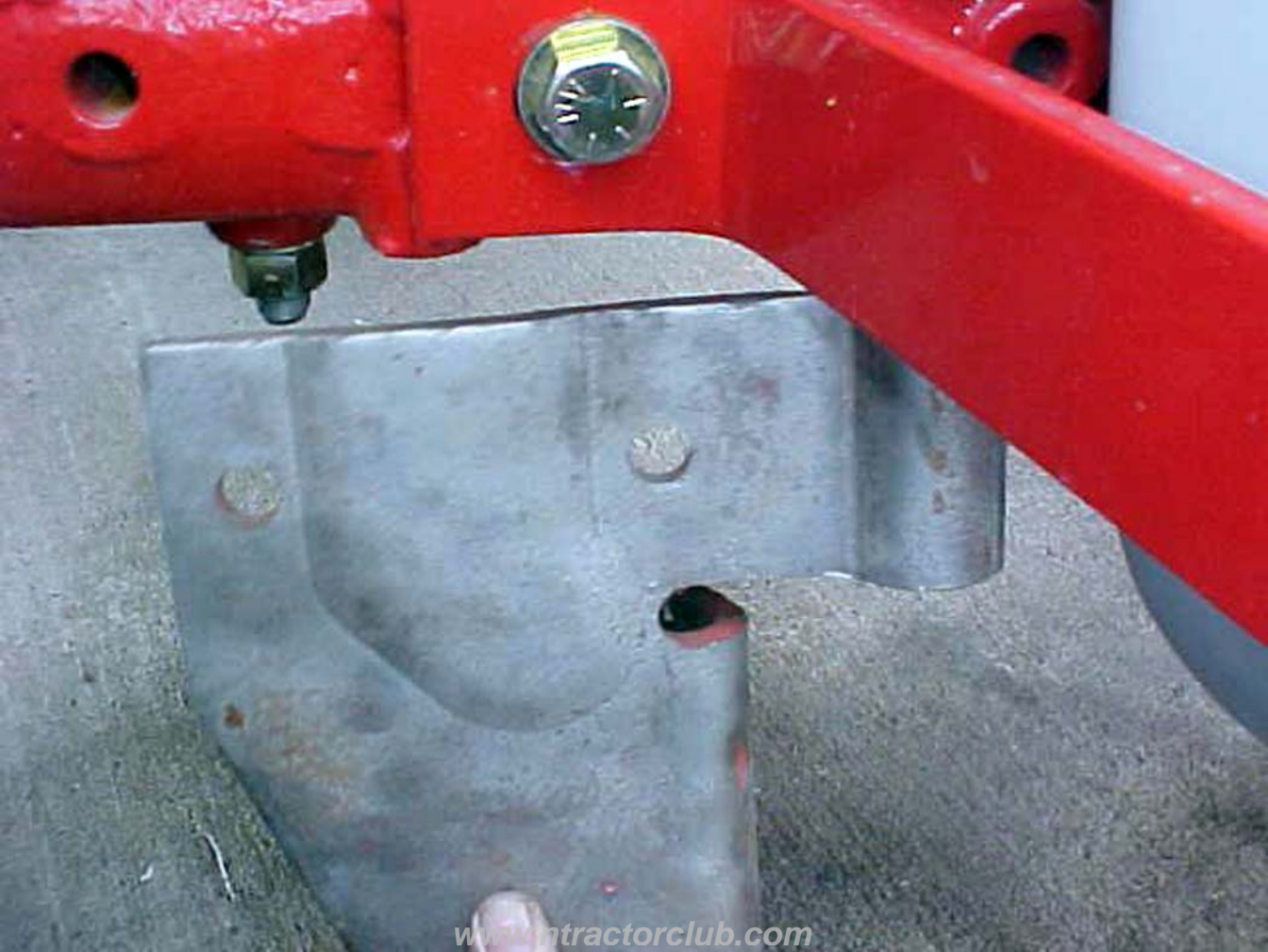
























KingMaster



Lift Bar is 31.5" long, 7/8" round stock
4.5" drop in center section







