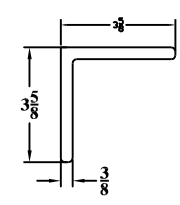
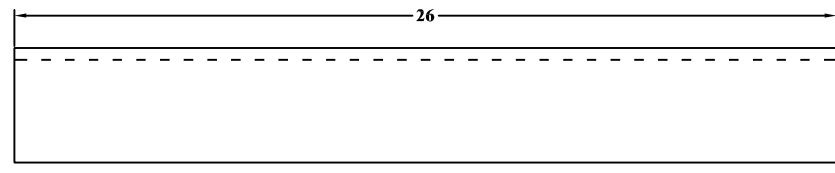
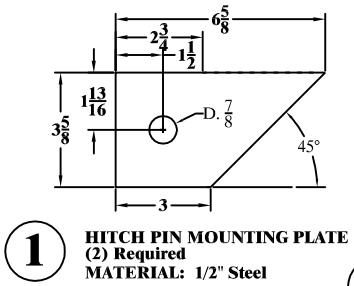


**All Bolts Grade 8
1/2 inch diameter
with Lock Washers**

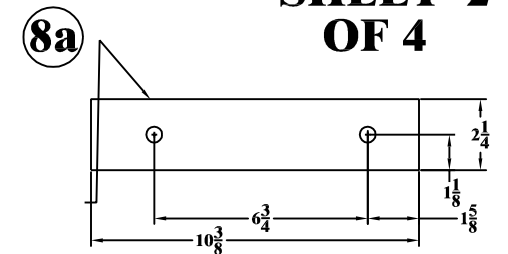
LENGTHS
2 - 2"
2 - 3"
2 - 3 1/4"

Design by:
Kenneth F. Crisman



1 HITCH PIN MOUNTING PLATE
(2) Required
MATERIAL: 1/2" Steel

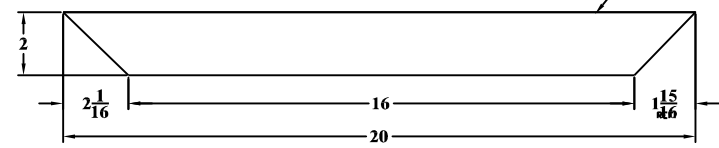
2 DRAW BAR
(1) Required
MATERIAL: 3 5/8 X 3 5/8 X 3/8 Angle Iron



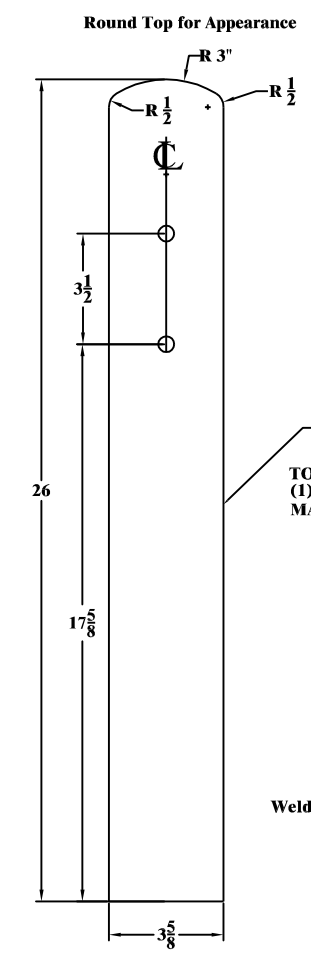
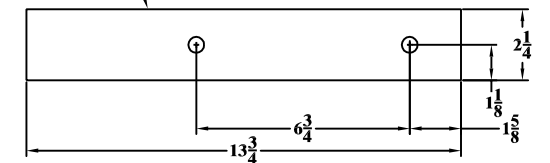
8a REAR PLATFORM (Top & Bottom)
(1) Required of each.
MATERIAL: 3/4" STEEL

4 TOP LINK ATTACHMENT BACK
(1) Required
MATERIAL: 1/2" Steel

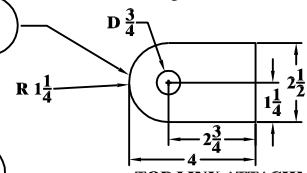
ANGLE BRACE
(2) Required
MATERIAL: 1/2" STEEL



7 VERTICAL BRACE
(2) Required
MATERIAL: 1/2" STEEL



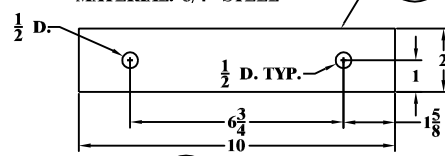
5 TOP LINK ATTACHMENT EARS
(2) Required
MATERIAL: 1/2" Steel



3 TOP LINK SUPPORT POST
(1) Required
MATERIAL: 1/2" Steel

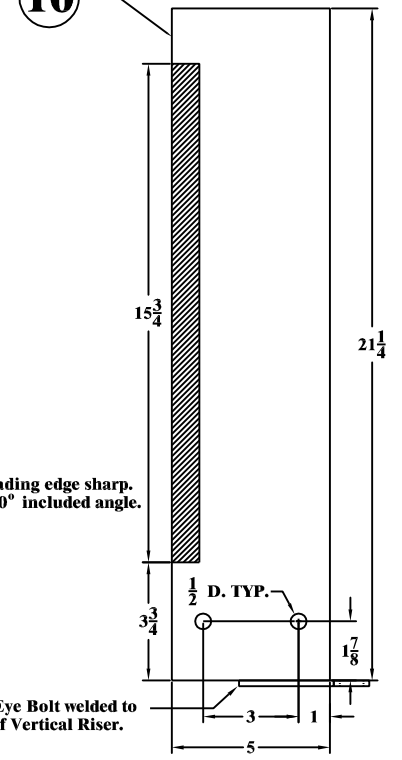
TOP LINK ATTACHMENT EARS
(2) Required
MATERIAL: 1/2" Steel

9 TOP PLATE - PLOW ASSEMBLY
(1) Required
MATERIAL: 3/4" STEEL



Attach to Item **8** with 2 1/2" Bolts

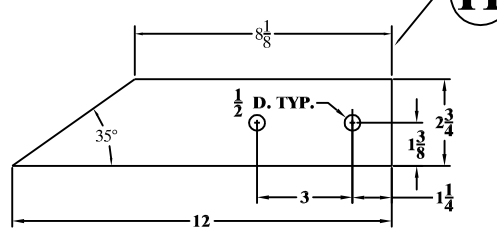
10 VERTICAL RISER - PLOW ASSEMBLY
(1) Required MATERIAL: 1" STEEL



Grind leading edge sharp.
Approx. 60° included angle.

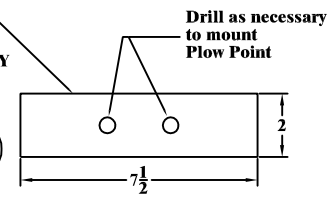
3/4 x 3" Eye Bolt welded to
bottom of Vertical Riser.

11 HORIZONTAL SUPPORT - PLOW ASSEMBLY
(2) Required
MATERIAL: 1/2" STEEL



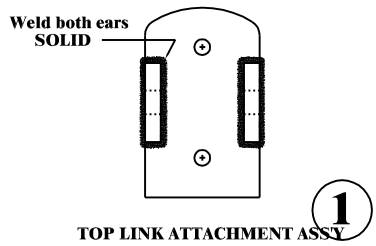
12 SHOE - PLOW ASSEMBLY
(1) Required
MATERIAL: 1/2" STEEL

Weld to front slope on Items **11**



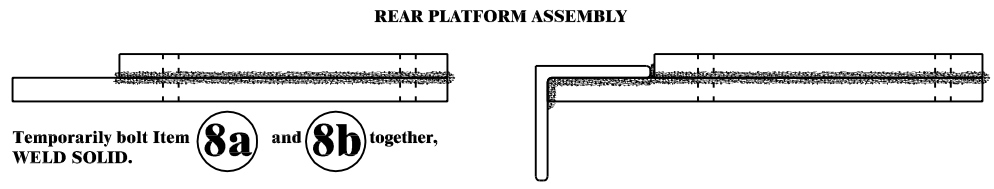
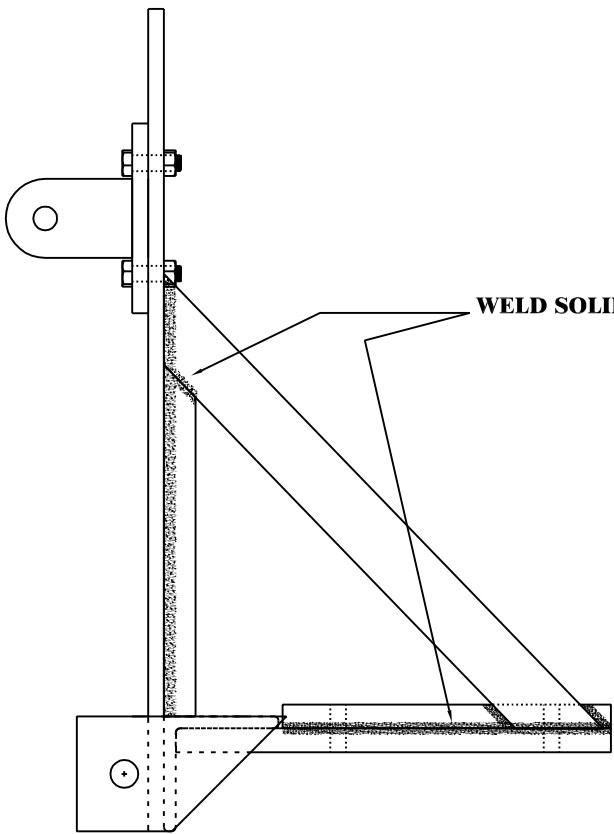
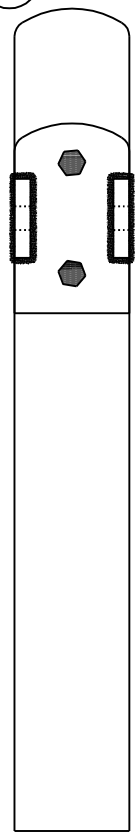
Drill as necessary
to mount
Plow Point

Design by:
Kenneth F. Crisman

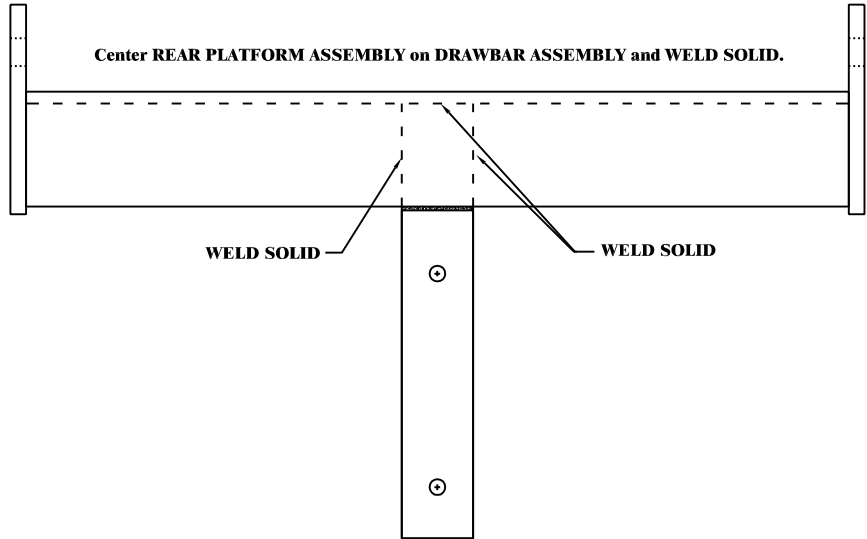


Weld Items **5** to **4**

Attach TOP LINK ATTACHMENT ASSY
to Item **3** using (2) 1/2 x 2" bolts



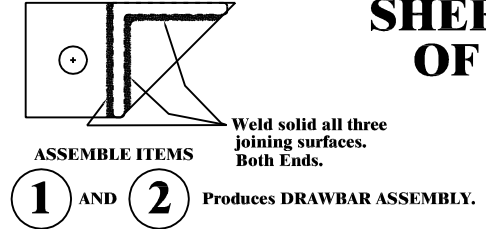
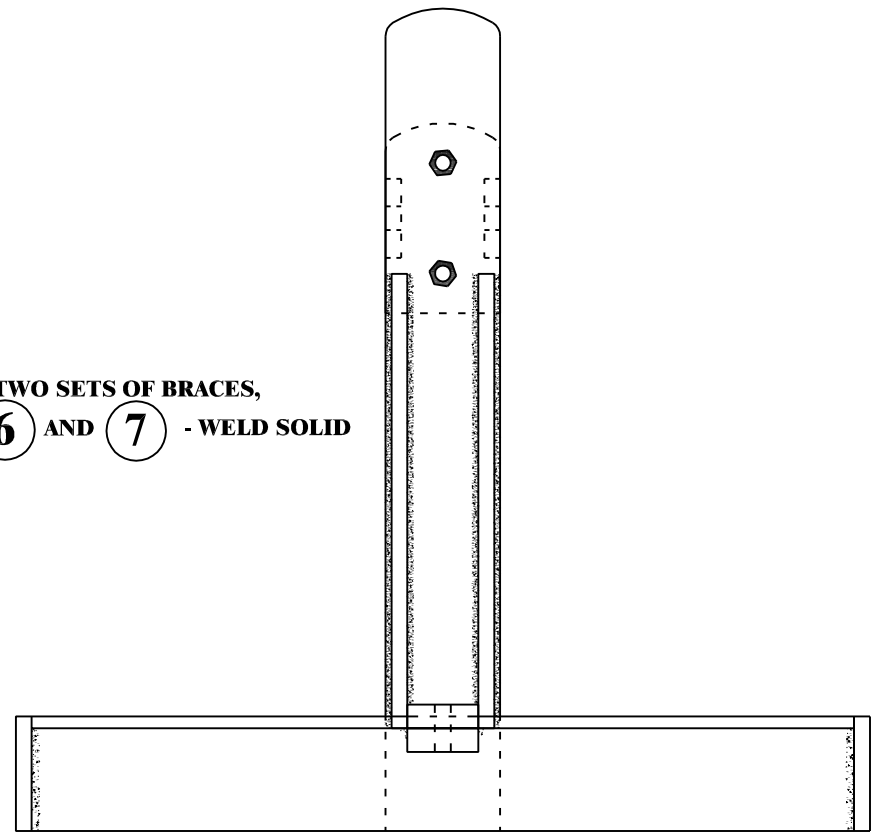
Center REAR PLATFORM ASSEMBLY on DRAWBAR ASSEMBLY and WELD SOLID.



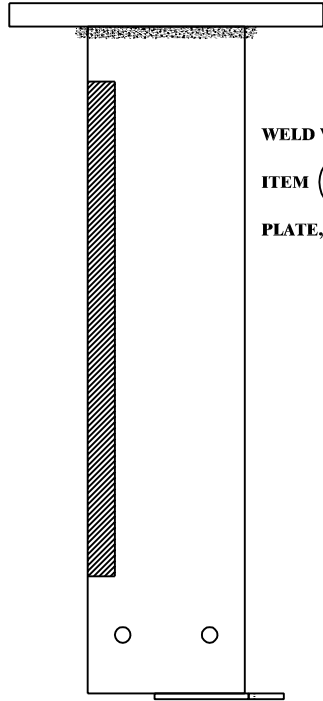
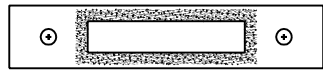
WELD SOLID

WELD SOLID

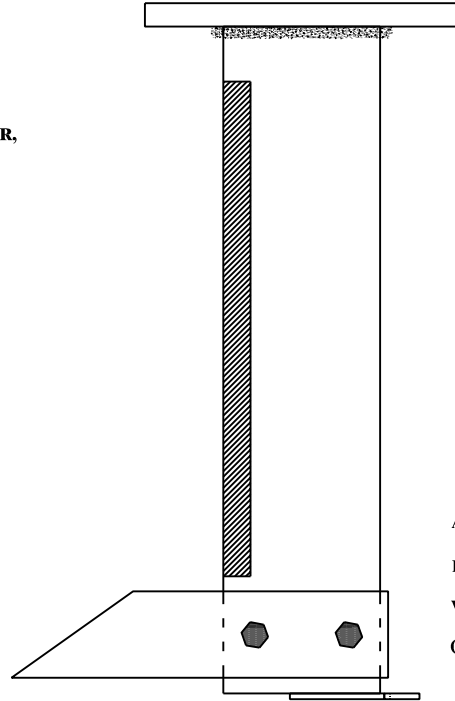
INSTALL TWO SETS OF BRACES,
ITEMS **6** AND **7** - WELD SOLID



Design by:
Kenneth F. Crisman

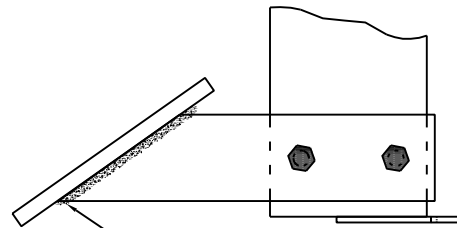
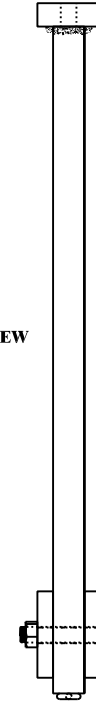


WELD VERTICAL RISER,
ITEM **10** TO TOP
PLATE, ITEM **9**



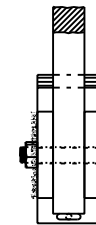
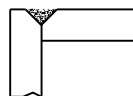
ASSEMBLE (2) HORIZONTAL SUPPORT,
ITEM **11** (ONE EACH SIDE) TO
VERTICAL RISER ASSEMBLY USING
(2) 1/2" x 3" GRADE 8 BOLTS.

REAR VIEW



WELD SHOE, ITEM **12** TO
FRONT SLOPE OF ITEMS **11**

GRIND V GROOVE,
FILL WITH WELD,
GRIND WELD SMOOTH.



Design by:
Kenneth F. Crisman